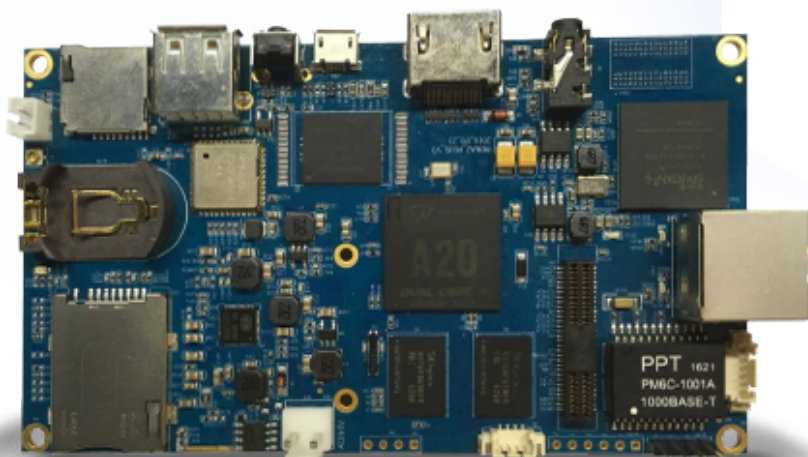




云智科技  
YDEACHN.COM

Service Hotline: 400-666-9216



# Media Player Specification

## Meda-2plus

Version: V04 Date: 2017-07-28

## Product Summary

MDEA2PLUS is YDEA for the advertising market, introduced a new low-cost integration of innovative LED display information release system, mainly for advertising network publishing, building lighting display.

MDEA2PLUS integrated networking publishing systems, stand-alone player system, LED control system in one, comes with a network interface (RJ45), WiFi, external 4G card, real-time publish information and video playback via network synchronization; comes with media player function, can be used as PC host uses to achieve a single player; built-in video processing and LED controller, compatible with LED synchronous asynchronous systems, and competitively priced. With this system, you can help customers simplify the system structure, reduce control costs.

It solved the structure of complex systems, more external devices, single function, control cost is too high, difficult system management, service problems.

## Product Feature

### ● Integration with asynchronous

MDEA2PLUS own video processing and LED controller, compatible with LED synchronous asynchronous systems.

### ● Simple system architecture

MDEA2PLUS integrated networking publishing systems, LED control systems, stand-alone player system in one of the LED media playback device, to achieve a highly integrated architecture.

### ● Centralized network management

MDEA2PLUS own network interface (RJ45), WiFi, external 4G card, you can publish information in real time over the network synchronization and video playback.

### ● Standalone media player

MDEA2PLUS own media player, you can use as a PC host to achieve a single player, integrated hardware codec module can support 720P HD video decoding and playback; content can be played after the store will make a good play on the hard disk and U disk.

### ● Control lower cost

MDEA2PLUS competitively priced, less peripheral devices that can help customers achieve lower costs.

### ● Better safety performance

MDEA2PLUS based on a common platform, stable performance does not crash, software upgrades easy to maintain, easy to use client, eliminating the need for a lot of training.

## Technical Specifications

### Hardware Configuration

Multi-media	Photo Viewer : BMP, JPEG, M-JPEG, GIF, PNG	CPU	Cortex-A7
	Video Format : MPEG1/2/4,H.263/H.264,RMVB,WMV/VC-1, MVC,AVS,MJPEG.	GPU	Mali400, Speed 400MHz
	Audio Format : MP3,WMA,WAV,OGG,FLAC,ALAC,APE,AMR, AAC,AC-3	RAM	DDR3 1GB
		ROM Flash	8GB

### Interface Configuration

HDMI	1 x HDMI1.3 Output(1280*720/60hz)	WIFI	802.11b/g/n
LED Video	1x RJ45, Support 1024*600*24bit*60Hz	Audio	1 x 3.5mm
USB	1 x USB, Support OTG、HOST and DEVICE, 1*USB-A ( Support a mouse, keyboard, 3G network card )		

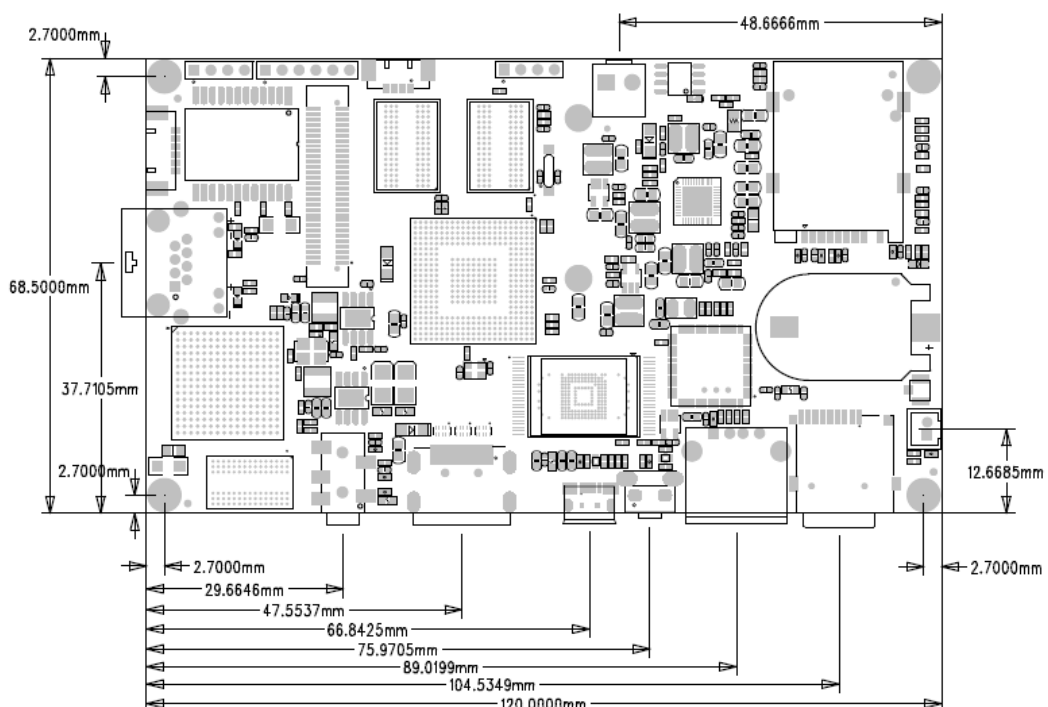
### Software Configuration

Operating system	Andriod 4.2.2	Control Software	YdeaFast V2.0.5.12
Player software	Player software system		

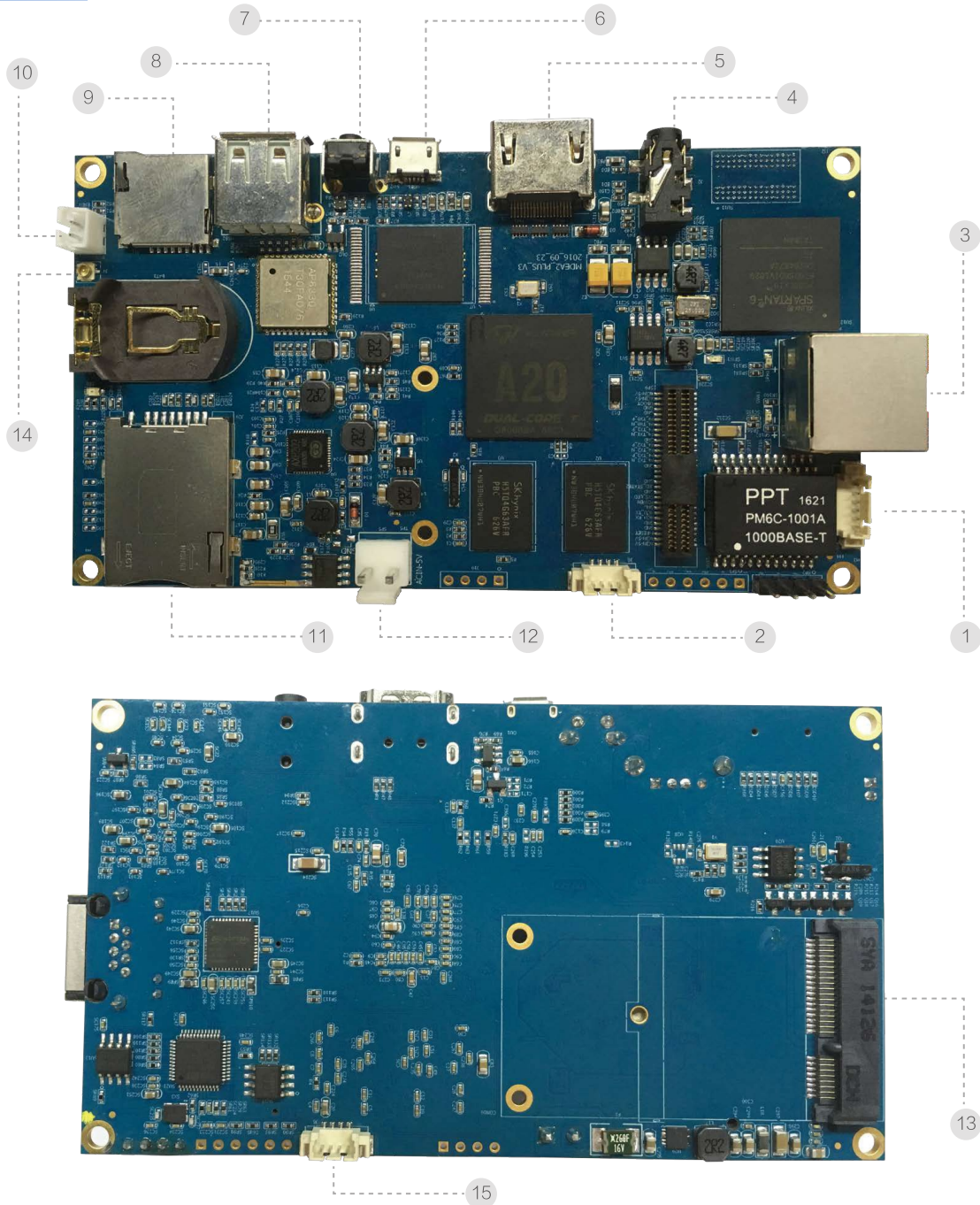
### Electrical Specifications

Power	Switching Power Supply ( 5V、3A )	Consumption	≤15W
Temperature	-40℃ ~ 75℃	Size (L × W)	120 mm × 68.5 mm

### Size of board



## Interface Definition



- |   |   |
|---|---|
| 1 Brightness sensor interface: Brightness sensor interface          | 2 Serial port7: Set aside a serial port interface     |
| 3 LED system output: Used for LED output signal                     | 4 3.5mmaudio connect: Connect headphones and speakers |
| 5 HDMI connect: Interface HDMI display, used for                    | 6 Micro USB: Burning system firmware                  |
| 7 Key: Used for wifi reset and system recovery work long wifi reset | 8 USB: Can meet U disk, mouse, keyboard               |
| 9 SDbooth: Used to expand storage capacity                          | 10 2PIN connect: Sub to burn system firmware          |
| 11 SIM connect: Unicom mobile 4Gcard and card                       | 12 DC input: DC5V/3A                                  |
| 13 PCIE connect: 4G module interface                                | 14 Antenna interface: Wifi antenna interface          |
| 15 Serial port1: Set aside a serial port interface                  |   |